

GEORGE KOCH SONS, LLC



KOCH MATERIAL HANDLING

**Tailored
to
Your
Needs**



GEORGE KOCH SONS, LLC

DESIGN

A properly designed material handling system is critical for the efficient transport of your product between or through any process. Properly designed and implemented systems will save thousands of man hours and millions of dollars each year. Koch's highly experienced personnel are the cornerstone to providing the most efficient and space saving system design.

There are many different methods of conveying a product, including Overhead and Inverted Systems, 3", 4", or 6" Monorail and Power & Free, Dual-Strand Conveyors, Dragline, Powered Roller Conveyors, Slat Lines, Towlines, De-Burgh™, Belt Conveyors, Automatic Guided Vehicles (AGV), and Automated Electrified Monorails (AEM).

In order to choose the best system, Koch's experienced staff of engineers will spend time with your engineering and manufacturing personnel, to accurately understand your product to be conveyed and system requirements. Our engineers then take this information back to our office to begin system evaluation, equipment layout, and pricing.

Whether you are in the initial stages of capital funding requests, in the middle of working out a system to meet the production needs of your company, or in the final stages of closing the best valued deal, let Koch be a partner in the solution to your material handling needs.

CUSTOMER SERVICE

Koch's Customer Service is second to none. We have dedicated personnel to handle all of your needs. During the installation phase, we will provide you with an owner's manual and a recommended spare parts list. Based on your individual requirements, pricing and availability will be quickly provided. In addition to this information, we have a 24-hour hotline that you can call in the event of an emergency.

MATERIAL HANDLING EQUIPMENT

ENGINEERING

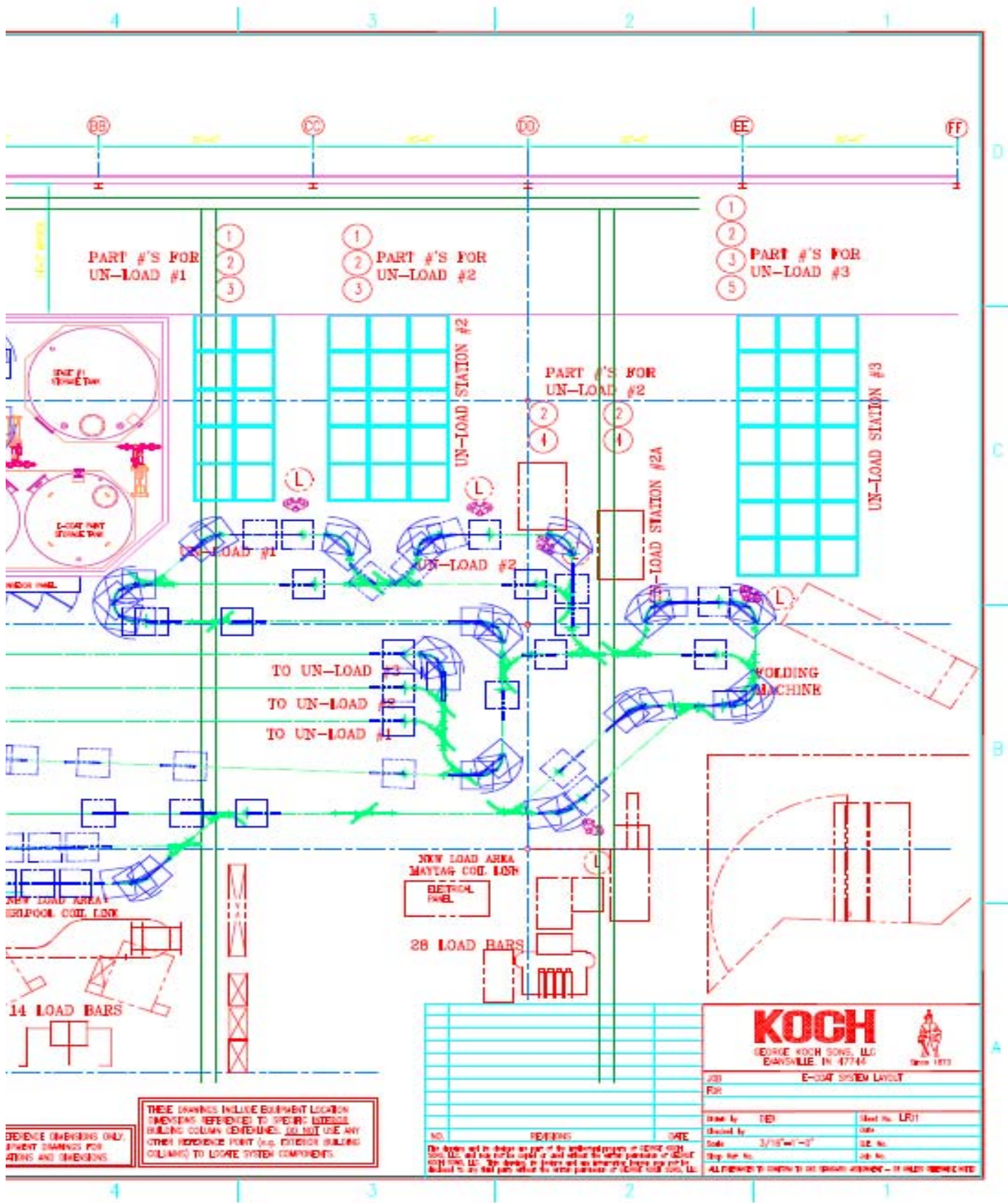
With over 50 years experience in engineering material handling systems, Koch has the expertise to take the designed system and dig into, analyze, and work out all of the minute details. This process begins with an AutoCAD drawing, which is used to analyze every aspect of the system. This analysis includes ware studies, the load and unload areas, each of the horizontal and vertical turns, and all of the associated equipment. Power & Free conveyors will be analyzed for proper dog spacing, proper transfer of product from chain to chain, proper location of limit switches, and all items necessary to meet the design production requirements. After this evaluation is complete, a computer analysis is made utilizing a point to point chain pull analysis to accurately determine the loading on the system, which dictates the location of all of the critical components of the system.

The *KochSmart*® Control System will be tailored to meet your individual needs. Our staff of controls engineers will work closely with your staff to design the equipment to match the requirements of the system. At the end of the project, all processes can be remotely monitored in order to aid in trouble shooting any problems that may arise, and quickly make required changes.

In addition to our engineering capabilities, Koch has the project management expertise to fully manage and control all aspects of your project. This includes initiating, planning, executing, monitoring, controlling, and close-out. Our project manager will handle all contracts, project scheduling, risk management, and integration of all purchased equipment. We will meet with you at the beginning of the project and be fully involved through the closeout and final acceptance .



LAYOUT DRAWING



THESE DRAWINGS INCLUDE EQUIPMENT LOCATION DIMENSIONS REFERENCED TO SPECIFIC INTERIOR BUILDING COLUMN CENTERLINES. DO NOT USE ANY OTHER REFERENCE POINT (e.g., EXTERIOR BUILDING COLUMNS) TO LOCATE SYSTEM COMPONENTS.

REFERENCE DIMENSIONS ONLY. ALIGNMENT DRAWINGS FOR DETAILS AND DIMENSIONS.

NO. REVISIONS DATE
 Do Not Scale and do not change as part of the engineering process or without written permission of GEORGE KOCH SONS, LLC. This drawing is prepared and its ownership remains the property of GEORGE KOCH SONS, LLC. All rights reserved. © 2011 GEORGE KOCH SONS, LLC.

KOCH
 GEORGE KOCH SONS, LLC
 BANSVILLE, IN 47744
 Since 1873

JOB: E-COAT SYSTEM LAYOUT
 FOR:

Drawn by: TEB	Sheet No.: LR01
Checked by:	Date:
Scale: 3/16"=1'-0"	Job No.:
Shop Part No.:	Job No.:

ALL DIMENSIONS TO CENTER UNLESS OTHERWISE NOTED

GEORGE KOCH SONS, LLC



MATERIAL HANDLING EQUIPMENT

INSTALLATION

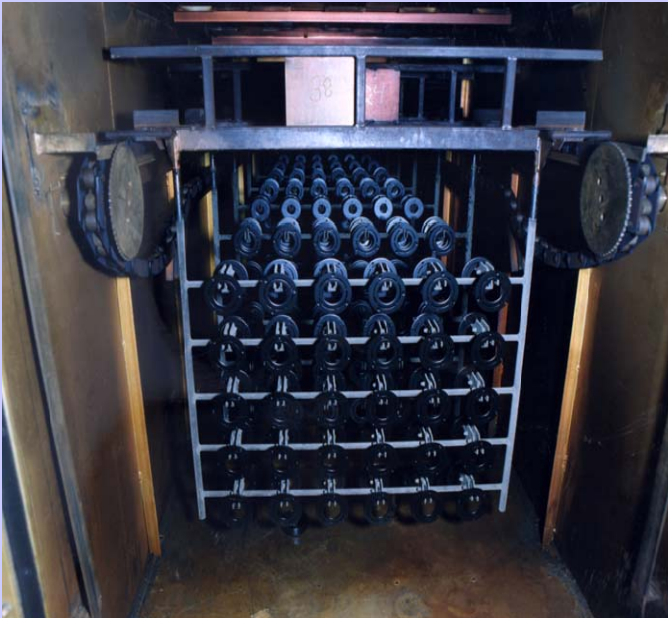


One of the most critical areas of the project is on-site installation. Koch's installation group consists of highly skilled and experienced field service technicians who are proven professionals uniquely qualified to provide you with the expertise and ability to completely install and commission your material handling system. Prior to the start in field date, a field supervisor is carefully selected and assigned to your project. The same supervisor will be with you throughout the installation process to closely monitor all aspects of the installation, including coordinating our efforts with all other activities, maintaining scheduling information, and working closely with you on a day to day basis.



Training will be provided when the installation is completed and start-up is in process. During the commissioning of the equipment, we will work closely with your electrical and mechanical staff making sure they fully understand the operation and maintenance of the equipment.

MATERIAL HANDLING EQUIPMENT



GEORGE KOCH SONS, LLC

10 S. ELEVENTH AVE.

EVANSVILLE, IN 47744

(812) 465-9600

sales@kochllc.com

Website: www.kochllc.com

